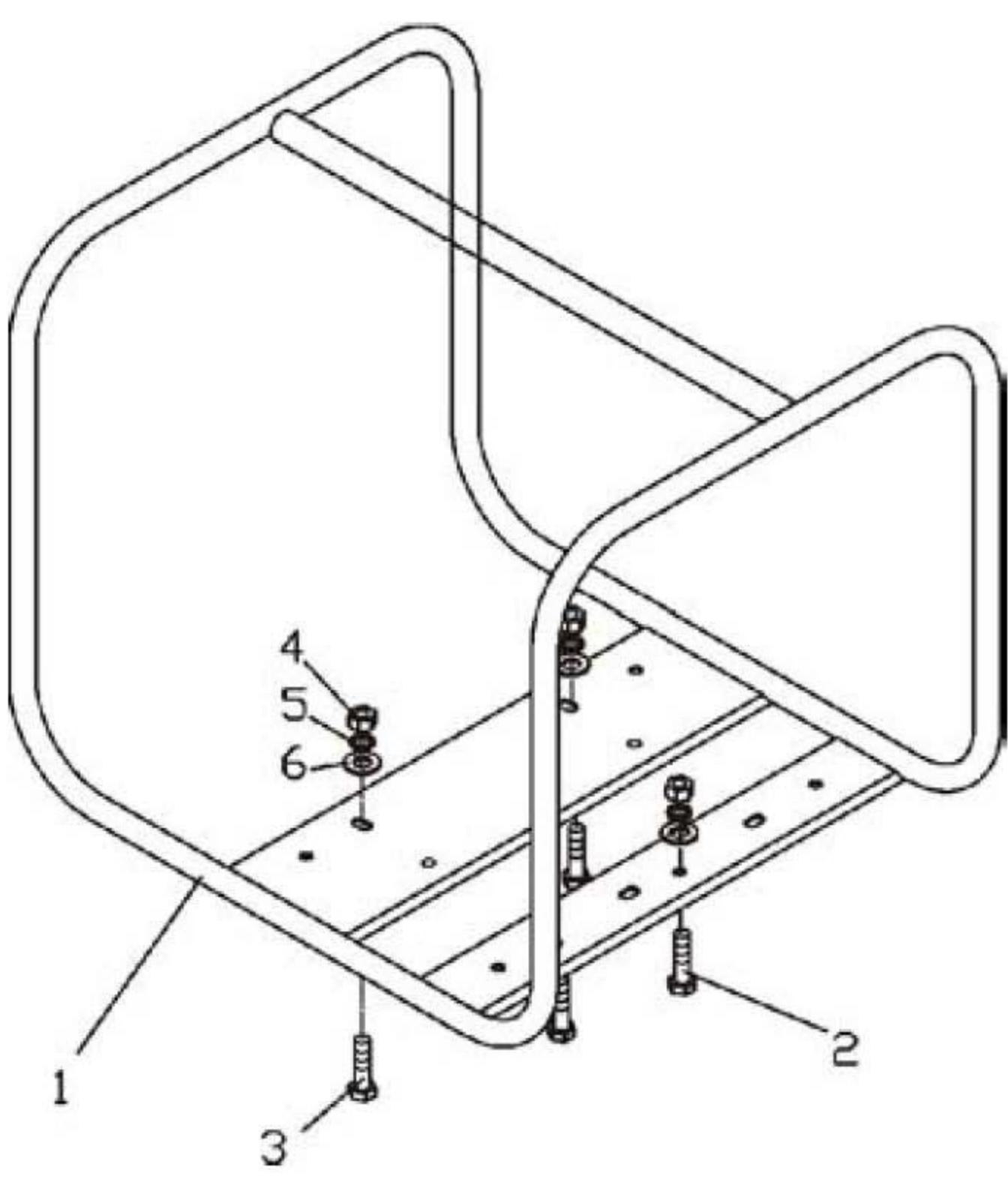


ASSEMBLY AND PARTS ALBUM



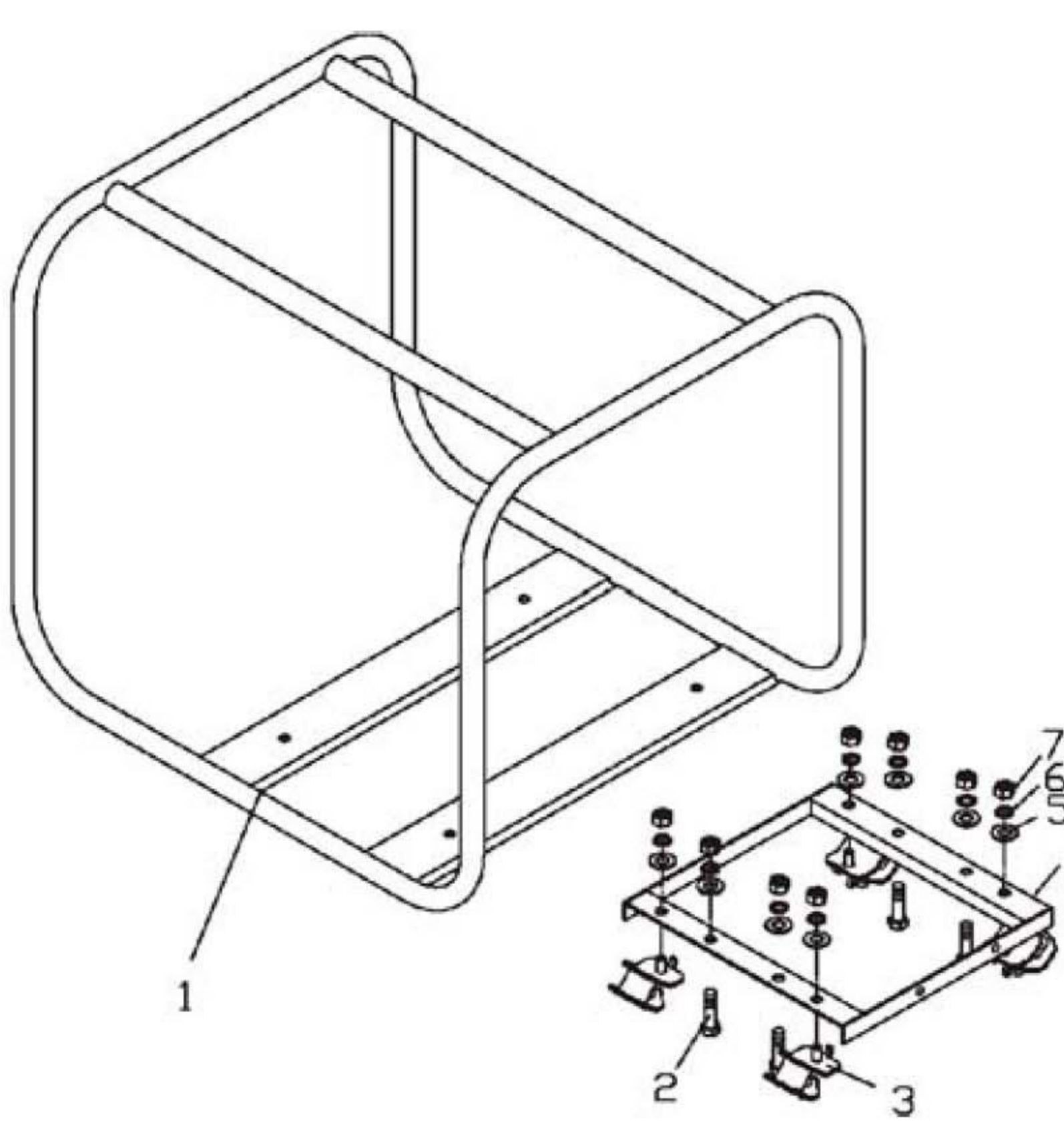
(2) 2" Pump Assembly (50SBZ-01000C)

No.	Code.	Description	Qty.
1	50SBZ-01012C	Screw Plug	2
2	GB/T3452.1-1992	O-Ring 25.8×3.55	2
3	GB/T5789-1986	Bolt M10×30	12
4	50SBZ-01005C	Drained Water Outlet Seat	1
5	50SBZ-01006C	Washer of Drained Water Outlet Seat	1
6	50SBZ-01008C	Rubber Seal Washer	2
7	50SBZ-01009C	Intake (Outlet) Pipe Joint	2
8	50SBZ-01007C	Locking Nut	2
9	50SBZ-01015	Adjusting Washer of Pump Cover	4
10	50SBZ-01001C	Pump Cover	1
11	50SBZ-01013C	Seal Washer	4
12	GB/T5789-1986	Bolt M8×35	4
13	GB/T3452.1-1992	O-Ring 218×3.55	1
14	50SBZ-01100C	Machine Seal Unit	1
15	50SBZ-01004C	Impeller	1
16	50SBZ-01003C	Diffuser	1
17	GB/T3452.1-1992	O-Ring 71×5.3	1
18	50SBZ-01002C	Pump Body	1
19	50SBZ-01200C	Flap Valve Assembly	1
20	50SBZ-01011C	Water Intake Seat	1



(3) Housing Assembly (SDP20-03000)

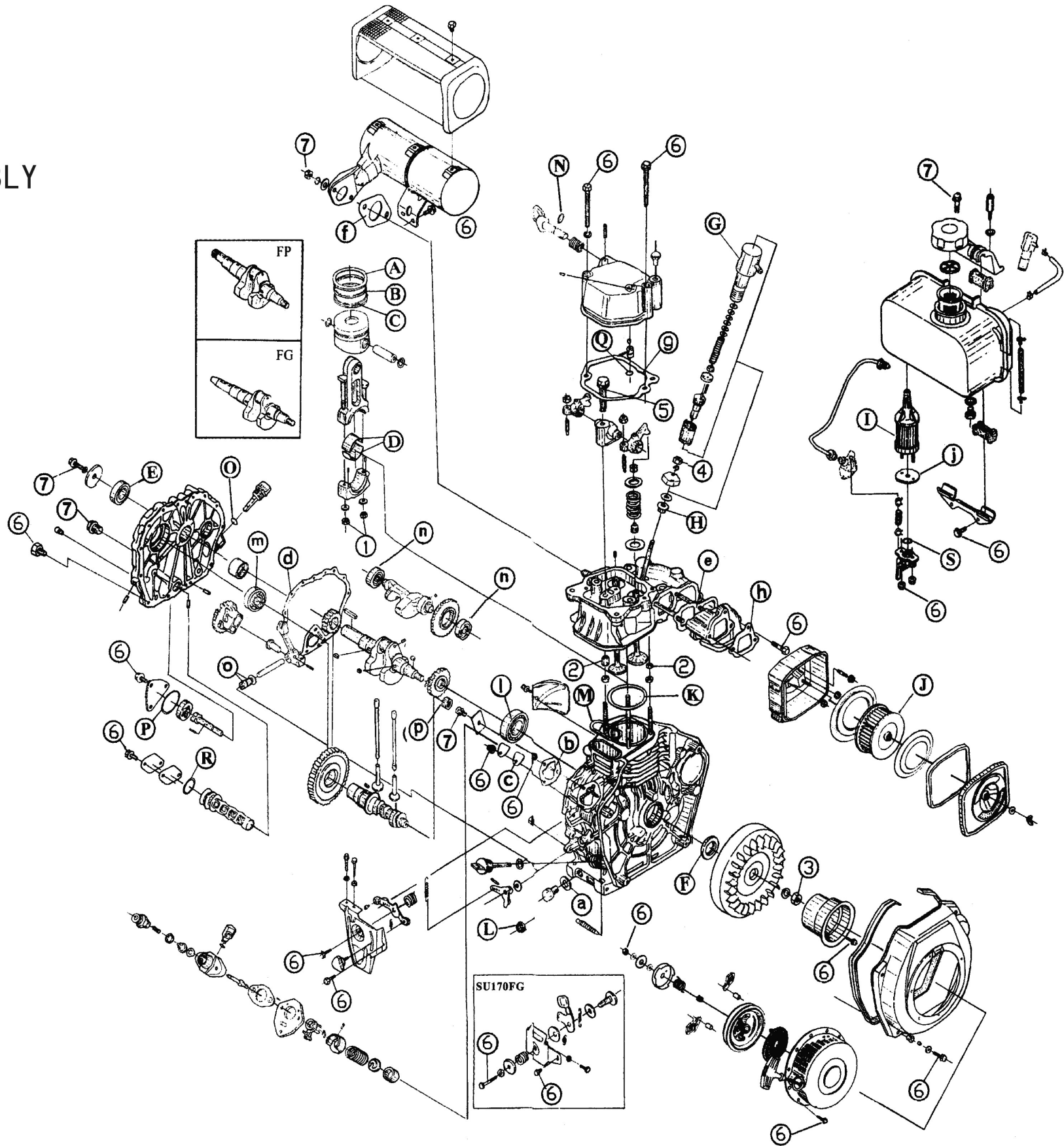
No.	Code.	Description	Qty.
1	50QBZ-01000	Housing	1
2	GB/T5781-1986	Bolt M8×35	2
3	GB/T5781-1986	Bolt M8×30	2
4	GB/T97.1-1985	Gasket 8	4
5	GB/T93-1987	Gasket 8	4
6	GB/T6170-1986	Nut M8	4



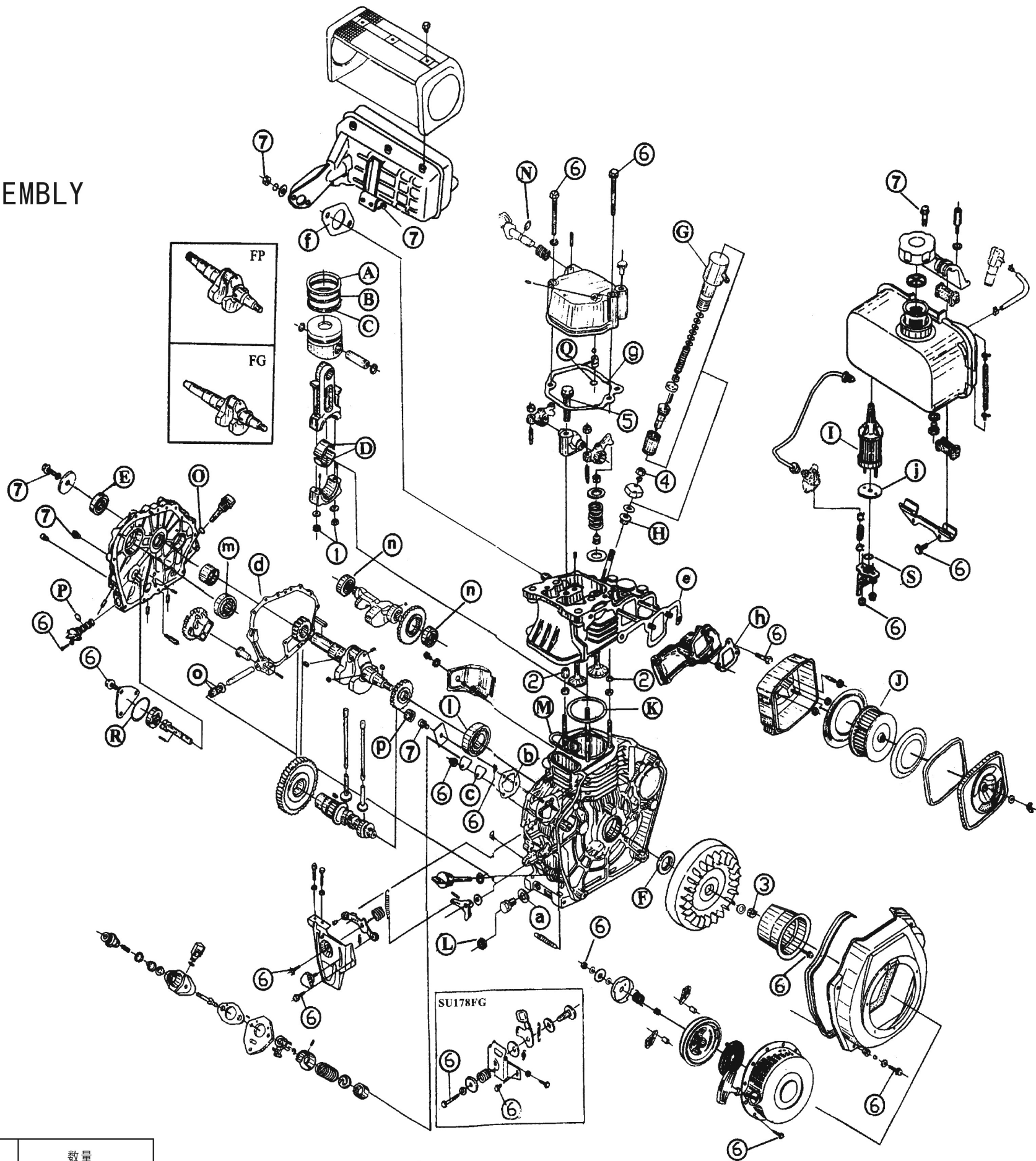
(4) Housing Assembly (SDP20-03000)

No.	Code.	Description	Qty.
1	50SBZ-03000	Housing	1
2	GB/T-5781-1986	Bolt M10×40	4
3	50SBZ-02001	Cushion	4
4	50SBZ-04000	Bracket	1
5	GB/T97.1-1985	Gasket 10	8
6	GB/T93-1987	Gasket 10	8
7	GB/T6170-1986	Nut M10	8

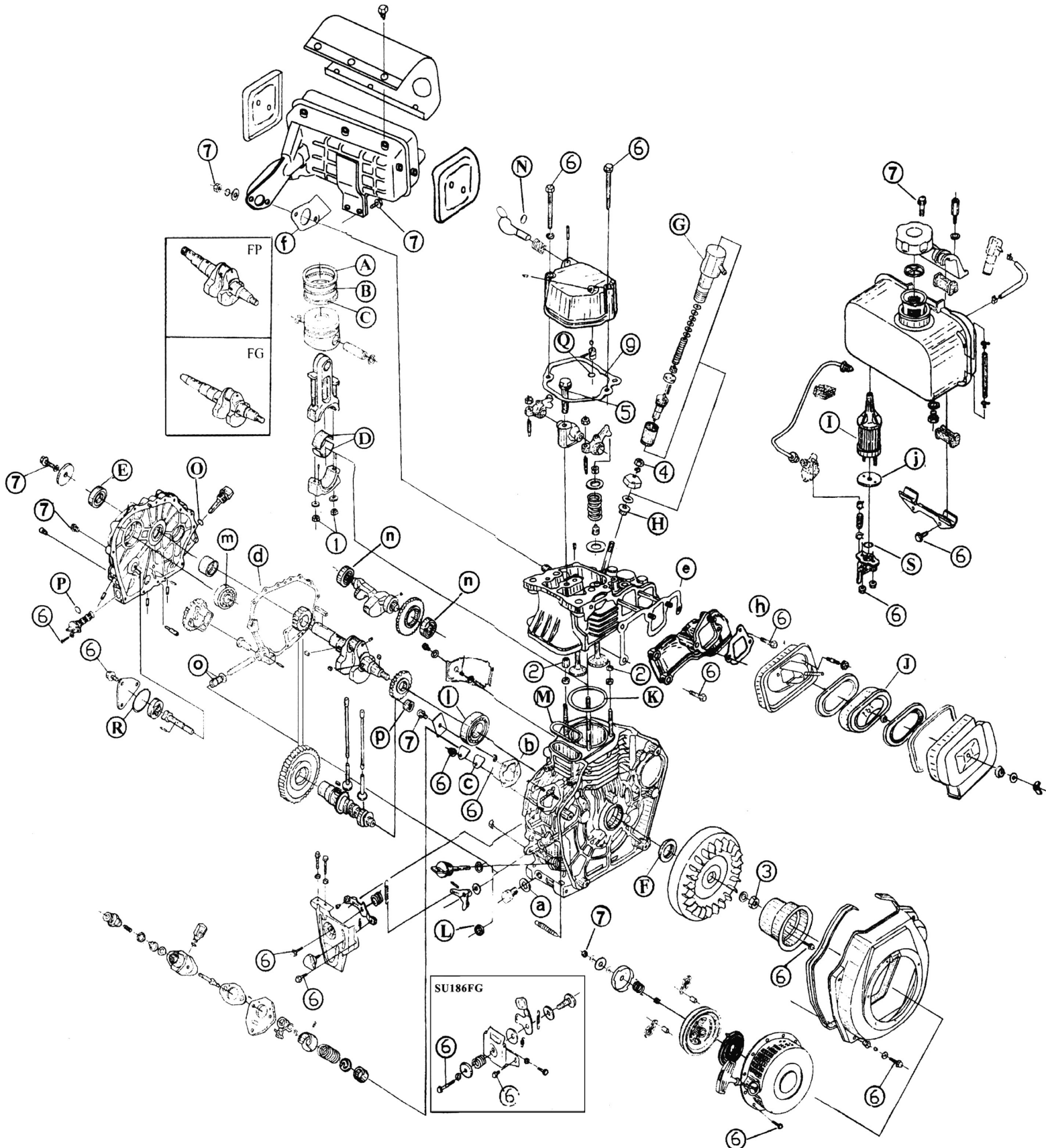
SU170 柴油机装配总成
SU170 DIESEL ENGINE ASSEMBLY



SU178 柴油机装配总成
SU178 DIESEL ENGINE ASSEMBLY



SU186 柴油机装配总成
SU186 DIESEL ENGINE ASSEMBLY



垫圈组 FULL GASKET SETS

序号	编号			名称			英文名称			数量		
NO	CODE			DESCRIPTION			DESCRIPTION			QUANTITIES		
	SU170	SU178	SU186	SU170	SU178	SU186	SU170	SU178	SU186	SU170	SU178	SU186
a	7001100			放油螺塞垫片			Oil Plug Seal Assem			1		
b	7012001			喷油泵垫片			Fuel Injection Pump Gasket			1		
c	7012002			密封板垫片			Seal Gasket			1		
d	7001015	7801015	8601015	曲轴箱盖垫片			Crank Case Gasket			1		
e	7002014	7802014	8602014	进气管垫片			Air Intake Gasket			1		
f	7002015	7802015	8602015	消声器垫片			Silencer Gasket			1		
g	7003003		8603003	气缸盖罩垫片			Bonnet Gasket			1		
h	7007001		8607001	空气滤清器垫片			Air Cleaner Gasket			1		
i	7009002			机油滤盖板垫片			Oil Filter Gasket			1		
j	7010007			柴油滤垫片			Fuel Oil Filter Gasket			1		

轴承 BEARINGS

序号	编号			名称			英文名称			数量		
NO	CODE			DESCRIPTION			DESCRIPTION			QUANTITIES		
	SU170	SU178	SU186	SU170	SU178	SU186	SU170	SU178	SU186	SU170	SU178	SU186
I	9801306	9801307	9801308	滚动轴承			Ball Bearing			1		
				6306	6307	6308	6306	6307	6308			
m	9801205	9801206	9801203	6205	6206	6207	6205	6206	6207	2		
n	9801202	9801203		6202		6203	6202		6203	2		
o	9802008			滚针轴承7941/8			Needle Bearing 7941/8			1		
p	9802015			滚针轴承37941/15			Needle Bearing 37941/15			1		

易损件 EASY DESTROYED PARTS

序号	编号			名称			英文名称			数量		
NO.	CODE			DESCRIPTION			DESCRIPTION			QUANTITIES		
	SU170	SU178	SU186	SU170	SU178	SU186	SU170	SU178	SU186	SU170	SU178	SU186
A	7004100	7804100	8604100	油环部件			Oil Ring Set			1		
B	7004001	7004001	8604001	第一道气环			First Gas Ring			1		
C	7004002	7004002	8604002	第二道气环			Second Gas Ring			1		
D	7004005	7804005	8604005	连杆轴瓦			Crank Pin Bearing			2		
E	9701025	9701302	9701351	油封			Oil Seal			1		
F	9701301		9701351	油封			Oil Seal			1		
G	7013000	7813000	8613000	喷油咀			Nozzle Valve			1		
H	7002011			隔热套			Spacer			1		
I	7010300	7810300	8610300	柴油滤芯部件			Filter Element Assem			1		
J	7007100		8607100	空气滤芯部件			Air Cleaner Element Assem			1		
K	7001013	7801013	8601013	气缸盖垫片			Cylinder Head Gasket			1		
L	7011008			油封SG8×14×2.5			Oil Seal SG8×14×2.5			1		
M	7001008	7801008	8601008	密封圈			Ring			1		
N	9702010			O形密封圈10×1.9			O-Ring10×1.9			1		
O	9702024			O形密封圈24×2.4			O-Ring24×2.4			2		
P	9702025			O形密封圈25×2.4			O-Ring25×2.4			1		
Q	9702012			O形密封圈12×1.9			O-Ring12×1.9			1		
R	9702345			O形密封圈34.5×1.8			O-Ring34.5×1.8			1		
S	9702132			O形密封圈13.2×1.9			O-Ring13.2×1.9			1		

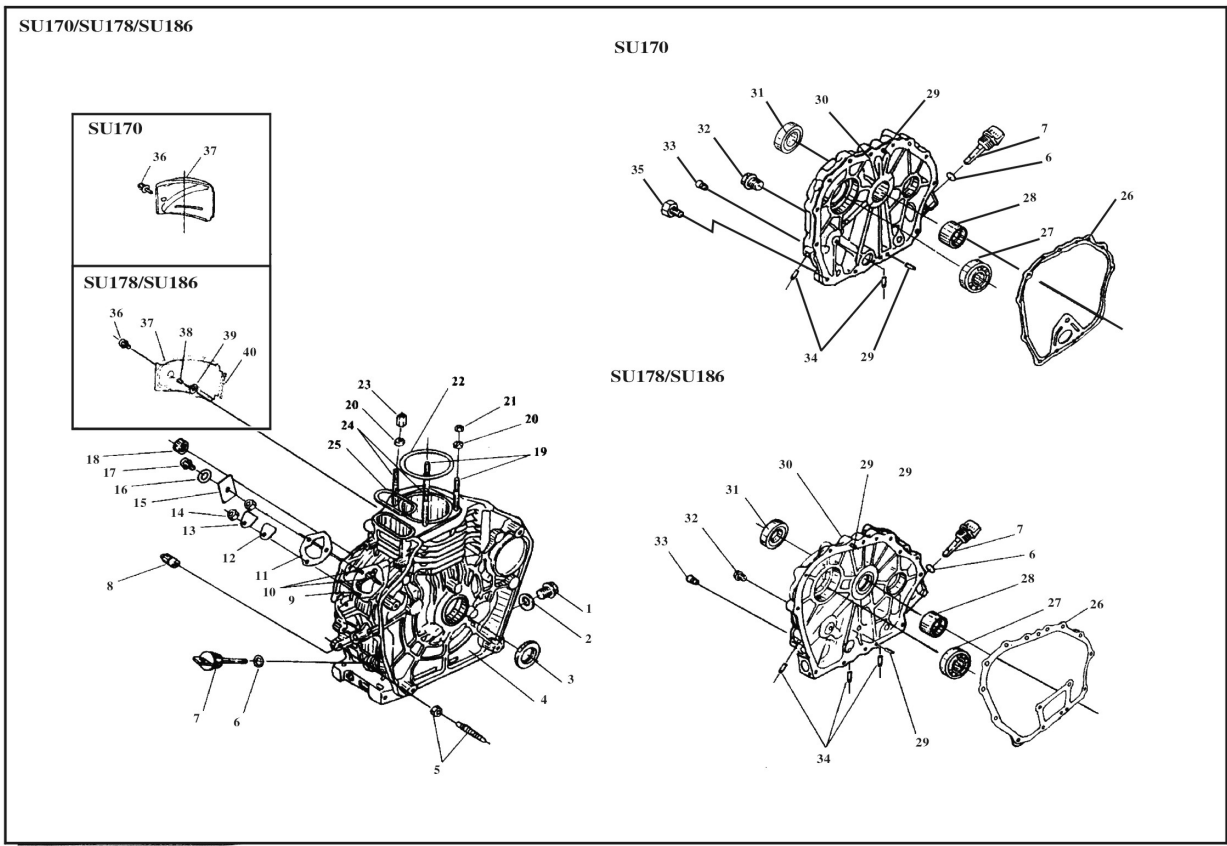
油封 SEALS

序号 NO.	编号			名称			英文名称			数量		
	CODE			DESCRIPTION			DESCRIPTION			QUANTITIES		
	SU170	SU178	SU186	SU170	SU178	SU186	SU170	SU178	SU186	SU170	SU178	SU186
E	9701025	9701302	9701351	油封			Oil Seal			1		
				SG25*42*10 SG30*45*10 SG35*50*10			SG25*42*10 SG30*45*10 SG35*50*10					
F	9701301		9701351	油封			Oil Seal			1		
				SG30*45*8 SG35*50*10			SG30*45*8 SG35*50*10					
L	7011008			油封SG8*14*2.5			Oil Seal SG8*14*2.5			1		

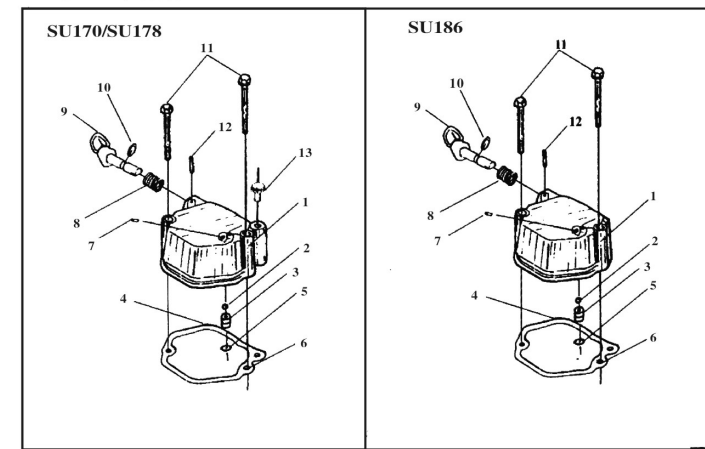
主要螺栓、螺母拧紧力矩一览表TORQUE FOR TIGHTEN UP MAIN SCREW BOLT AND NUT
单位：牛·米unit: N·m

序号 NO.	名称 Description	型号 Model	SU170	SU178	SU186
1	连杆螺母 Connecting rod nut		25~30		40~45
2	气缸盖螺母 Cylinder head nut		28~32	42~46	54~58
3	飞轮螺母 Fly wheel nut		120~130		130~150
4	喷油器压板螺母 Nozzle retainer		10~12		
5	摇臂座紧固螺栓 Tight screw bolt of Rocker support		20~22		43~47
6	标准M6螺栓 Standard M6 bolt		10~12		
7	标准M8螺栓 Standard M8 bolt		18~22		

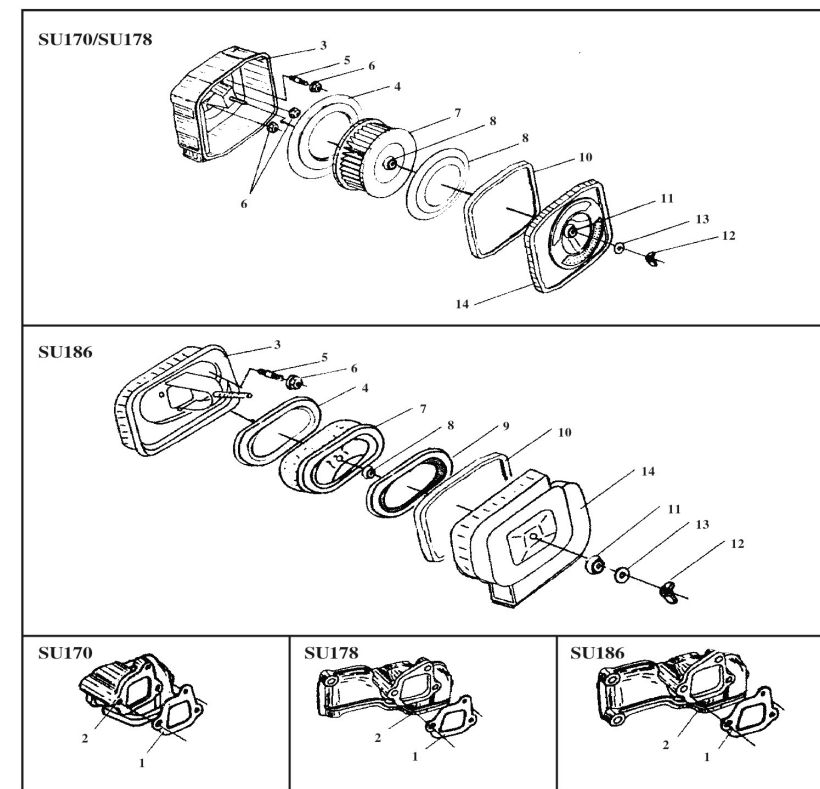
1 机体总成 CYLINDER BLOCK ASSEMBLY



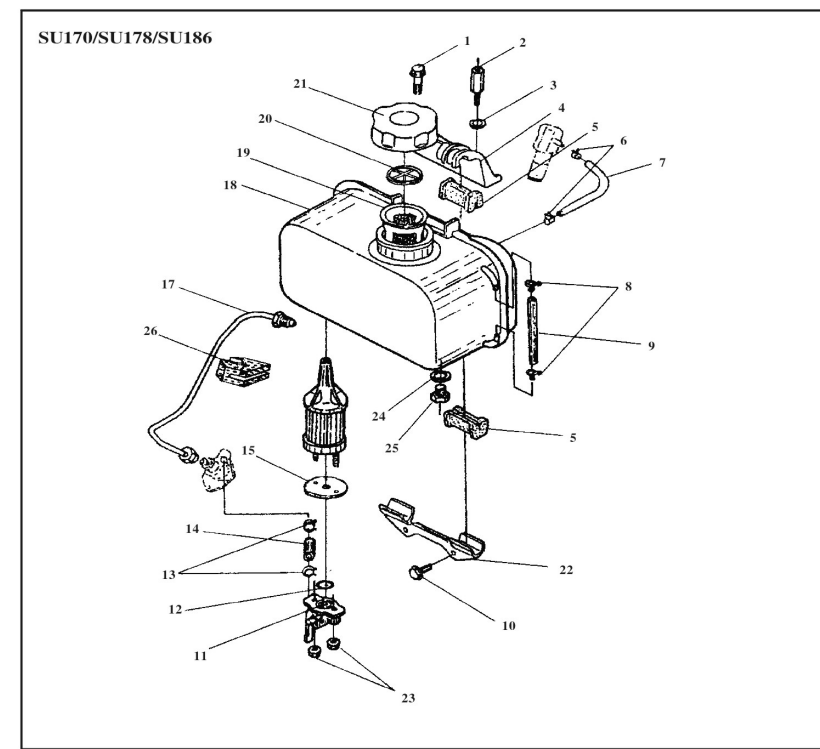
3 气缸盖罩总成 CYLINDER HEAD BONNET ASSEMBLY



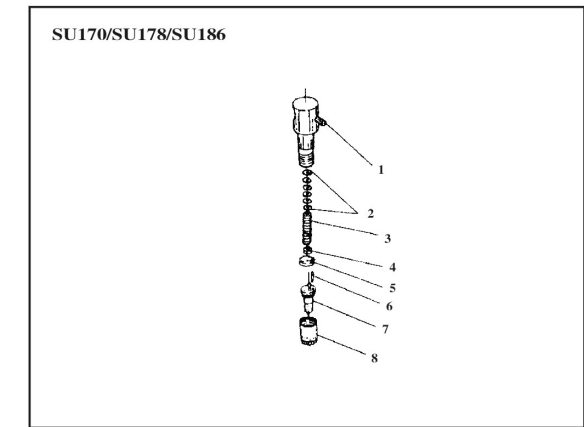
7 进气系统总成 AIR CLEANER ASSEMBLY



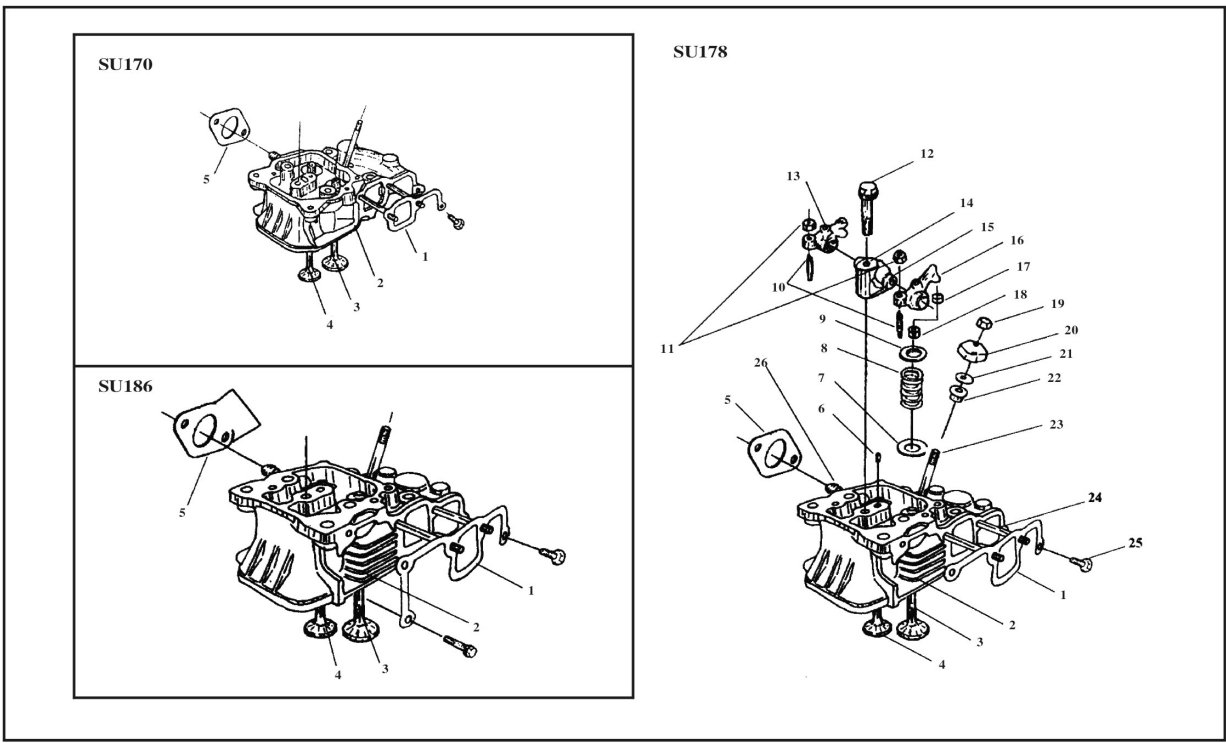
10 燃油系统 FUEL TANK & FUEL PIPE ASSEMBLY



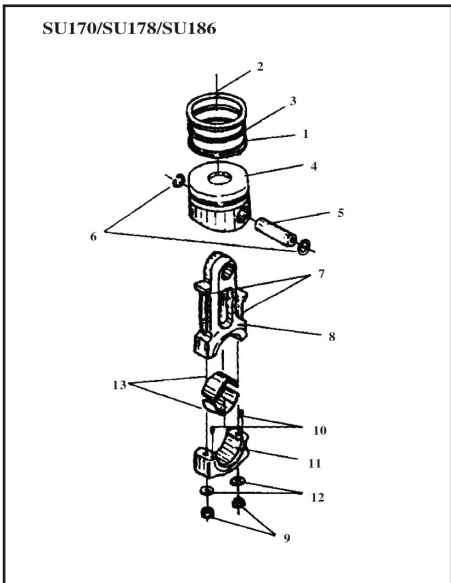
13 喷油器总成 FUEL NOZZLE ASSEMBLY



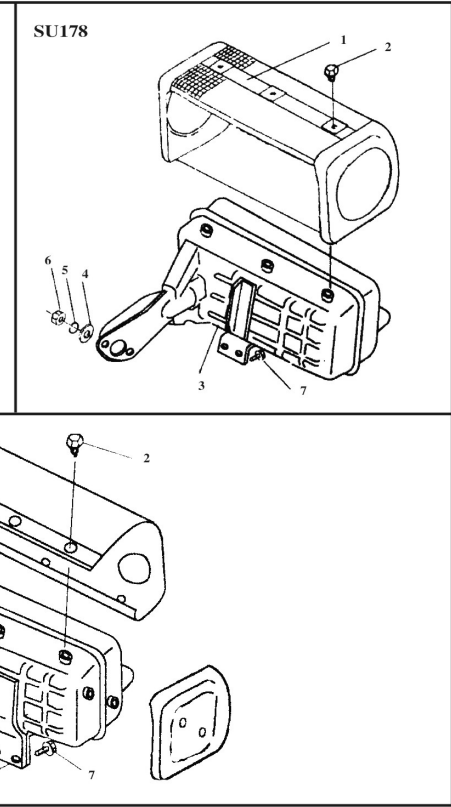
2 气缸盖总成 CYLINDER HEAD ASSEMBLY



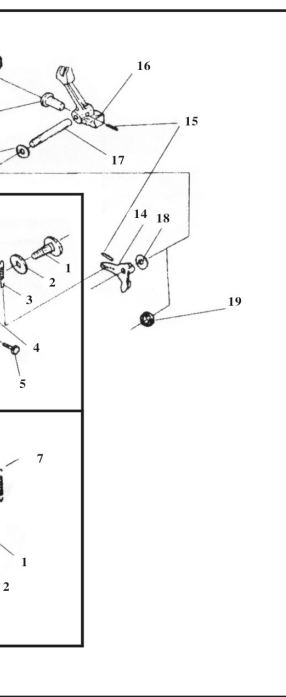
4 活塞连杆总成 PISTON & CONNECTING ROD ASSEMBLY



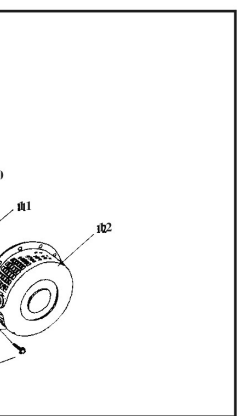
8 消声器总成 SILENCER ASSEMBLY



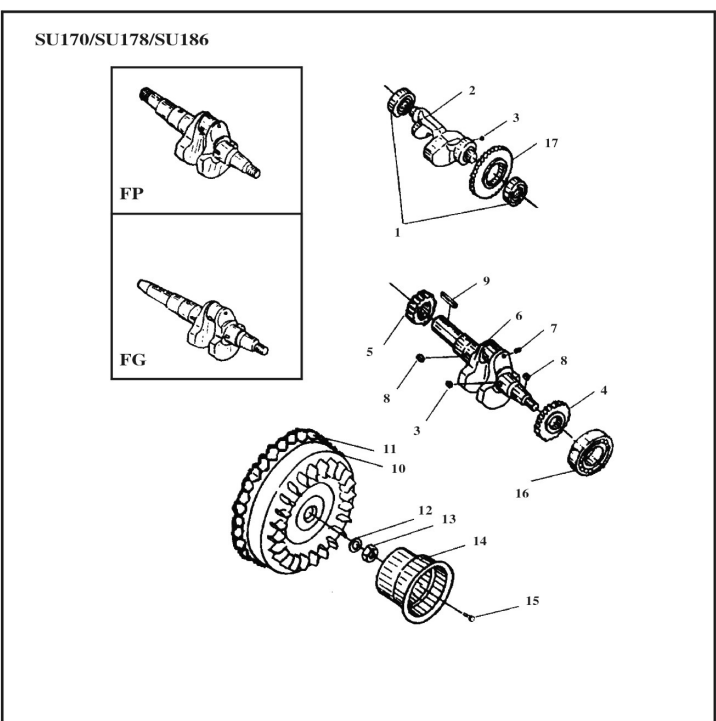
11 调速及操纵系统 GOVERNOR & CONTROL SYSTEM



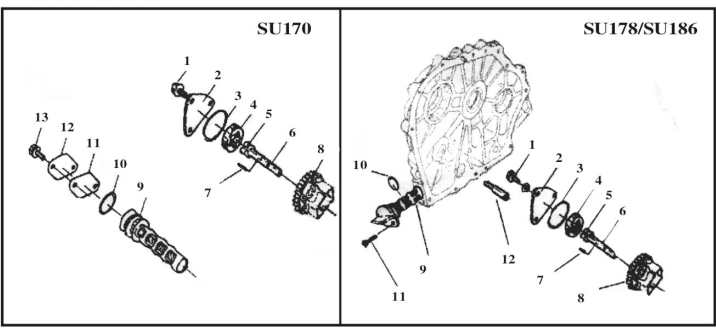
14 手拉启动总成 RECOIL STARTER ASSEMBLY



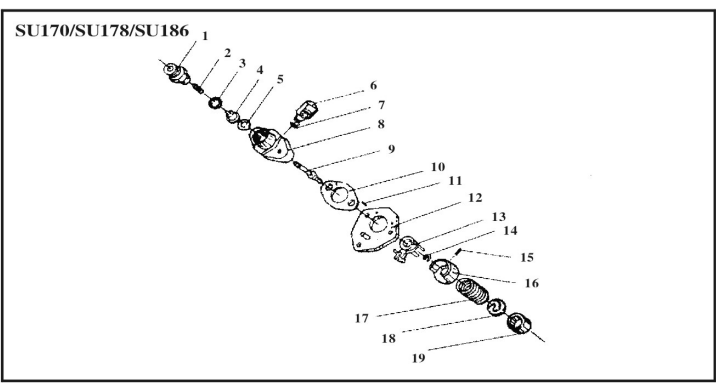
5 曲轴飞轮总成 CRANK SHAFT & FLYWHEEL ASSEMBLY



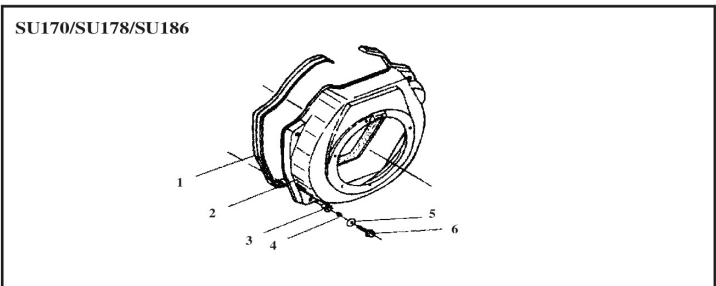
9 润滑系统总成 LUBE OIL SYSTEM



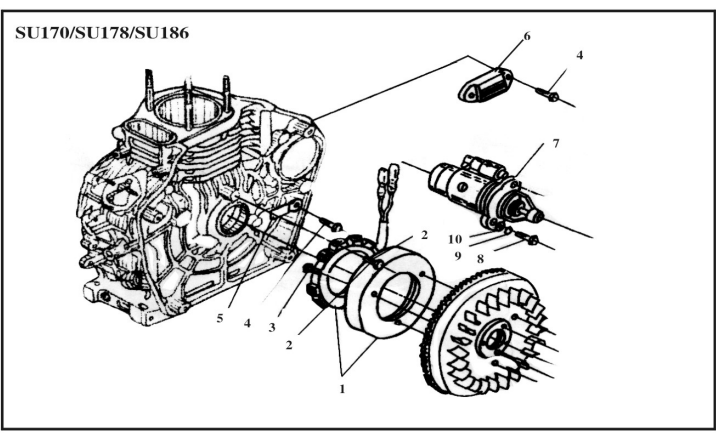
12 喷油泵总成 FUEL INJECTION PUMP ASSEMBLY



15 导风罩总成 COOLING DEVICE ASSEMBLY



16 起动机及发电机系统 STARTER & GENERATOR ASSEMBLY



1 机体总成 CYLINDER BLOCK ASSEMBLY

序号	编号			名称			英文名称			数量			
NO	CODE			DESCRIPTION			DESCRIPTION			QUANTITIES			
	SU170	SU178	SU186	SU170	SU178	SU186	SU170	SU178	SU186	SU170	SU178	SU186	
1	7001017			放油螺塞			Drain Plug			1			
2	7001100			放油螺塞垫片			Oil Plug Seal/Assem			1			
3	8701301			飞轮			Fly Wheel			1			
4	7001001	7801001	8601001	机体			Cylinder Block			1			
5	7011200			油室控制部件			Fuel Controller Assm			1			
6	9702024			O形密封圈2*4 2			O-Ring2*4x2 2			2			
7	7001002	7801002		滤油网			Oil Filter Cap			2			
8	9802008			滚针轴承7941/4			Needle Bearing7941/4			2			
9	7001012			喷油泵盖螺栓（短）			Stud Plate(Short)			1			
10	7001011			喷油泵盖螺栓（长）			Stud Plate(Long)			2			
11	7012001			喷油泵垫片			Fuel Injection Pump Gasket			When Necessary			
12	7012003			燃油泵密封垫片			Seal Gasket			1			
13	7012002			燃油泵密封板			Seal Plate			1			
14	9901061			异形螺母M6			Nut M6			3			
15	7001009			止推片			Retainer			1			
16	9903080			平垫圈8			Washer8			1			
17	9902081			螺栓M*12			Bolt M*12			1			
18	9802015			滚针轴承7941/1.5			Needle Bearing7941/1.5			1			
19	7001003	7801003	8601003	气缸盖螺栓（短）			Cylinder Head Stud(Short)			2			
20	7001007	7801007	8601007	气缸盖螺栓（长）			Cylinder Head Stud(Long)			4			
21	7001005	7801005	8601005	气缸盖螺母（短）			Cylinder Head Nut(Short)			2			
22	7001013	7801013	8601013	气缸盖垫片			Cylinder Head Gasket			1			
23	7001006	7801006	8601006	气缸盖螺母（长）			Cylinder Head Nut(Long)			2			
24	7001008	7801008	8601008	气缸盖螺母（短）			Cylinder Head Nut(Short)			2			
25	7001004	7801004	8601004	气缸盖螺母（长）			Cylinder Head Nut(Long)			2			
26	7001008			密封圈			Ring			1			
27	7001015	7801015	8601015	曲轴箱垫片			Crank Case Gasket			1			
28	9801206			燃油泵螺母			Nut/Bushing			1			
29	9801205	9801206	9801207	燃油泵螺母			Nut/Bushing			1			
30	7801014	7801014	8601014	燃油泵螺母			Nut/Bushing			1			
31	9905081			螺栓M*12			Pin2*12			2			
32	7001016	7801016	8601016	曲轴箱盖			Crank Case Cover			1			
33	9701025	9701302	9701351	螺栓M*12			Bolt M*12			1	15	16	
34	9902089			螺栓M*12			Bolt M*12			1			
35	7001019			内六角螺母			Plug			1			
36	7001021			铝堵头8			Plunger8			2	3	3	
37	9902072	螺栓M*25			BoltM*25			BoltM*25			14	1	
38	9902064			螺栓M*14			BoltM*14			1			
39	7801018	7801018	8601018	引风板			Air Gover			1			
40	7801502			引风板衬套			Air Gover Collar			1			
41	7801601			减震垫块			Shock Absorber			1			
42	7801603			减震垫条			Shock Absorber Seat			1			

5 曲轴飞轮总成 CRANK SHAFT & FLYWHEEL ASSEMBLY

序号	编号			名称			英文名称			数量		
NO	CODE			DESCRIPTION			DESCRIPTION			QUANTITIES		
	SU170	SU178	SU186	SU170	SU178	SU186	SU170	SU178	SU186	SU170	SU178	SU186
1	9801202		9801203	平衡轴		平衡轴	Balance Shaft					2
2	7005007	7805007	8605007	平衡轴			Balance Shaft					
3		9904051		键5*7			Key5*7					
4	7005006	7805006	8605006	平衡轴传动齿轮			Balance Gear					
5	7005004	7805004	8605004	曲轴正时齿轮			Crank Shaft Timing Gear					
6	7005201	7805201	8605201	曲轴			Crank Shaft					1
7	7005202			活塞			Piston					
8		9904052		键4*12			Key4*12			2	2	1
9			9904053	键4*14			Key4*14					
	9904054		9904051	滚子			Roller					1
10	7005101	7805101	8605101	飞轮			Fly Wheel					
11	7005102	7805102	8605102	飞轮齿圈			Fly Wheel Gear					
12	7005003		8605003	飞轮螺母垫圈			Fly Wheel Nut Washer					
13	7005002		8605002	飞轮螺母			Fly Wheel Nut					
14	7005001	7805001	8605001	启动爪盘			Startor Pulley					
15		9902062		螺栓M*12			Bolt M*12			3	3	4
16	9801306	9801307	9801308	平衡轴			Balance Shaft					
17	7005009	7805009	8605009	平衡轴齿轮			Balance Gear					

10 燃油系统总成 FUEL TANK & FUEL PIPE ASSEMBLY

序号	编号			名称			英文名称			数量		
NO	CODE			DESCRIPTION			DESCRIPTION			QUANTITIES		
	SU170	SU178	SU186	SU170	SU178	SU186	SU170	SU178	SU186	SU170	SU178	SU186
1		9902086		螺栓M*45			Bolt M*45			1		
2		7010003		油箱上支架螺母垫圈			Upper Stay Bolt			1		
3		9903080		平垫圈8			Washer8			1		
4	7010001	7810001	8610001	油箱上支架			Upper Stay			1		
5		7010002		油箱减震垫			Damper			1		
6		7010013		回油管卡箍			Clamp			2		
7		7010012		回油管			Fuel Oil Return Pipe			1		
8		7010005		回油管卡箍			Clamp			2		
9		7010006		回油管			Fuel Level Pipe			1		
10		9902064		螺栓M*14			Bolt M*14			2		
11		7010400		油箱开关体部件			Fuel Tank Check Assem			1		
12		9702132		O型密封圈1.3*1.8			O-Ring 1.3*1.8			1		
13		7010011		回油管卡箍			Clamp			2		
14		7010009		回油管			Fuel Oil Pipe			1		
15		7010007		回油管垫圈			Fuel oil Filter Gasket			1		
16	7010300	7810300	8610300	燃油器控制部件			Fuel Control Assem			1		
17	7010500	7810500	8610500	高压油管部件			Fuel Injection Pipe Assem			1		
18	7010201	7810201	8610201	燃油器控制部件			Fuel Tank Wielded Assem			1		
19		7010004		燃油器控制部件			Fuel Oil Filter			1		
20		7010015		滤油器			Fuel Filter Mark			1		
21		7010100		油箱盖部件			Fuel Tank Cap Assem			1		
22		7010014		油箱下支架			Lower Stay Assem			1		
23		9901061		螺母M6			Nut M6			2		
24		7010016		油箱放油器垫片			Fuel Tank Oil Plug Seal Assem			1		
25		9902121		螺栓M12*1.25*14			Bolt M12*1.25*14			1		
26		8610017		减震支架			Fuel Injection Pipe Damper			1		

13 喷油器总成 FUEL NOZZLE ASSEMBLY

序号	编号			名称			英文名称			数量		
NO	CODE			DESCRIPTION			DESCRIPTION			QUANTITIES		
	SU170	SU178	SU186	SU170	SU178	SU186	SU170	SU178	SU186	SU170	SU178	SU186
1	7013200			喷油器壳体部件			Nozzle Holder Assen			1		
2	7013007			垫片			Shim Pack			按需要(Necessary)		
3	7013006			调压弹簧			Nozzle Spring			1		
4	7013005			压杆			Spring Retainer			1		
5	7013003			中间体			Stop Plate			1		
6	7013004			定位销			Pin			2		
7	7013100		8613100	喷油嘴零件			Nozzle Valve			1		
8	7013002			喷油嘴罩帽			Nozzle Case Nut			1		

2 气缸盖总成 CYLINDER HEAD ASSEMBLY

序号	编号	名称	英文名称	数量		
NO	CODE	DESCRIPTION	DESCRIPTION	QUANTITIES		
	SU170	SU178	SU186	SU170	SU178	SU186
1	7002014	7802014	8602014	进气管垫片	1	
2	7002200	7802200	8602200	气缸盖部件	1	
3	7002003	7802003	8602003	进气门	1	
4	7002004	7802004	8602004	排气门	1	
5	7002015	7802015	8602015	进气门垫片	1	
6	9905041			PinHex		
7	7002007	8602007	8602007	气门弹簧罩圈	2	
8	7002005	7802005	8602005	气门弹簧	2	
9	7002002	7802002	8602002	气门弹簧座	2	
10	7002105			气门弹簧垫片	1	
11	9901060			Nut M6	1	
12	7002106	8602106	8602106	气门弹簧罩圈	2	
13	7002103	8602103	8602103	排气阀销	1	
14	7002102	8602102	8602102	排气阀销	1	
15	7002101	8602101	8602101	排气阀销	1	
16	7002104	8602104	8602104	进气阀销	1	
17	7002106	7802106	8602106	气门弹簧垫片	2	
18	7002001	7802001	8602001	气门弹簧	4	
19	9901061			Nut M6	2	
20	7002009			Nozzle Retainer	1	
21	7002018			Seal-on Washer	1	
22	7002011			Seal-on	1	
23	9902061			Stud Allen#20	2	
24	9903083	9903084	9903085	Stud Allen#20	2	
25	9902010			Stud Allen#20	1	3
26	9903081			Stud Allen#20	2	

6 凸轮轴总成 CAMSHAFT ASSEMBLY

序号	编号			名称			英文名称			数量		
NO	CODE			DESCRIPTION			DESCRIPTION			QUANTITIES		
	SU170	SU178	SU186	SU170	SU178	SU186	SU170	SU178	SU186	SU170	SU178	SU186
1	7006100	7806100	8606100	气门摇臂总成			Valve Rod Assem			2		
2	7006005		8606003	气门挺柱			Valve Tappet			2		
3	7006002	7806002	8606002	凸轮轴正时齿轮			Camshaft Timing Gear			1		
4	9904053	9904041	9904053	螺栓			Bolt			1		
5	7006001	7806001	8606001	凸轮轴			Camshaft			1		

7 进气系统总成 AIR CLEANER ASSEMBLY

序	编号	名称	英文名称	数量		
NO	CODE	DESCRIPTION	DESCRIPTION	QUANTITIES		
	SU170	SU178	SU186	SU170	SU178	SU186
1	7007001	8607001	空气滤清器滤芯片	Air Cleaner Gasket	1	
2	7007401	7807401	8607401	进气管	Intake Pipe	
3	7007300	8607300	空气滤清器壳底部零件	Air Cleaner Bottom Case Assm	1	
4	7007305	8607305	防震垫圈 II	Shock Absorber Washer II	1	
5	7007002	8607002	空气滤清器壳顶部零件	Air Cleaner Element Top	1	
6	9901061		并形螺母 M6	Nut6	3	
7	7007100	8607100	空气滤芯总成	Air Cleaner Element Assm	1	
8	7007101	8607101	滤芯密封圈	Air Cleaner Element Shock Absorber	1	
9	7007203	8607203	防震垫圈 I	Shock Absorber Washer I	1	
10	7007201	8607201	密封胶圈	Ring		
11	7007211	8607211	防震垫圈 III	Air Cleaner Shock Absorber	1	
12	7007107	8607107	防震垫圈 IV	Ring		
13	9903080	9903080	防震垫圈 V	Washer		
14	7007200	8607200	空气滤清器壳顶部零件	Air Cleaner Cover Assm	1	

11 调速及操纵系统 GOVERNOR&CONTROL SYSTEM

序	编号		名称		英文名称		数量	
NO.	CODE		DESCRIPTION		DESCRIPTION		QUANTITIES	
	SU170	SU178	SU178	SU186	SU170	SU186	SU170	SU186
1	7011401		调速手柄轴		Control Handle Shaft		1	
2	7011402		手柄垫片		Governor Handle Shaft Washer		2	
3	7011006	7011006	调速弹簧		Governor Spring		1	
4	7011009		限位杆限位销		Limit Rod Pin		1	
5	7011406		高速限位螺钉		High-Speed Limit Screw		1	
6	890106		螺帽		Nut M6		1	
7	8902084		螺帽M=14		Bolt M=14		1	
8	890209		螺帽M=20		Bolt M=20		1	
9	8901010		螺帽D=1.25		Nut M=1.25		1	
10	7011407		限位套		Block-Governor Cover		1	
11	7011408		弹簧（FS）		Spring		1	
12	7011404		调速手柄支架		Handle Bracket		1	
13	7011403		限位杆手柄		Control Handle		1	
14	7011110		调速杆手柄操作		Governor Lever Washed Part		1	
15	8611022		限位杆		Limit Rod		1	
16	7011601	7811601	8611601		限位销		1	
17	7011102		红杆轴		Lever Shaft		1	
18	7011003		调速杆杆轴油圈		Governor Lever Washer		1	
19	7011008		油封（14×2.5）		Seal= 14×2.5		1	
20	7011004		润滑油泵盖		Tapet		1	
21	7011001				Fly Block		2	
22	7011002		飞锤销		Fly Block Pin		2	